

ATMOS

by CAVCO



3 bedrooms



2 baths



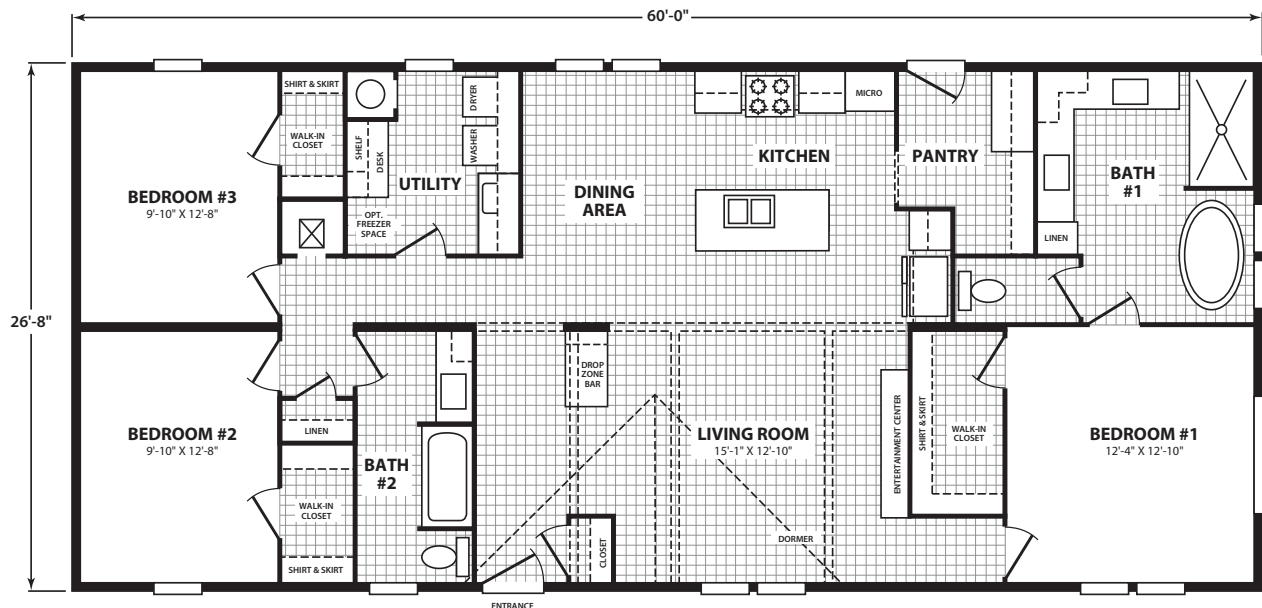
1600 sqft
28' x 60'

MUST-SEE

Packaged Standard Features

- **Black accents** on windows, hardware, faucets and tub fixtures
- **Island kitchen** with 42" cabinets & huge walk-in pantry
- **Built-in command center with desk** in laundry room
- **Beamed ceiling** in living room with **built-in entertainment center**
- **Modern wood accents** in living area
- **Black-grid shower door** and ceramic tile shower in primary
- **Freestanding tub** in primary
- **Separate sink areas with LED mirrors** in primary
- **Eyebrow dormer** with **shake, board/batt & black trim** on exterior
- **Craftsman-style front door**

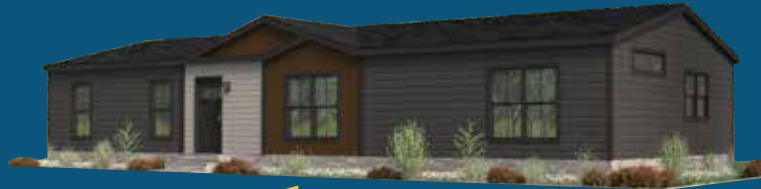
EVEN MORE ON BACK!



**NOW
NATIONALLY
AVAILABLE**

Atmos.CavcoHomes.com





NOW
NATIONALLY
AVAILABLE

Not-So-Standard ATMOS Features

- **Painted Drywall** throughout
- **Architectural Shingles**
- **Black Windows**
- **Ceramic Tile Shower** - Primary bath
- **Acoustic Slat Wood Accents**
- **LED Mirrors** - Primary bath
- **Freestanding Tub**

ATMOS **STAND OUT** Standard Features

- 42" cabinets
- Ceramic tile throughout
- Full ceramic tile backsplash
- Energy Star V2*
- Dormer
- Exceptional exterior with eyebrow, shake, board/batt & black trim
- Hardboard fascia
- Craftsman front door with deluxe hardware
- Inswing rear door
- Stainless sink, dishwasher and microwave
- Stainless side-by-side refrigerator
- Black rattan pendants over kitchen island
- Smooth-top range with designer range hood
- Painted shelving in pantry
- Easy-trim accent beams in living room
- Drop zone with shelves
- Black faucets throughout
- Black hardware cabinets & interior doors
- 60" walk-in shower, primary bath
- Black grid shower door
- Freestanding tub, primary bath
- 36" vanities
- Square porcelain sinks
- Fiberglass 2nd bath shower/tub
- Elongated commodes
- 2" blinds
- Utility sink & storage cabinets
- Folding table/desk in utility
- Can lights throughout
- Water shutoff valves
- 40-gallon water heater
- Accented entertainment center
- Accented island

*AS AVAILABLE BY PLANT

Cavco Homes
Cavco Homes
Fleetwood Homes
Palm Harbor Homes
Destiny Homes
Fleetwood Homes
Fairmont Homes
Friendship Homes
Solitaire Homes
Fleetwood Homes
Palm Harbor Homes
Fleetwood Homes
MidCountry Homes

DURANGO, AZ
GOODYEAR, AZ
RIVERSIDE, CA
PLANT CITY, FL
MOULTRIE, GA
NAMPA, ID
NAPPANEE, IN
MONTEVIDEO, MN
DUNCAN, OK
WOODBURN, OR
MILLERSBURG, OR
LAFAYETTE, TN
DORCHESTER, WI

Adam Uhlenkott
Jeff Severe
Gabriel Aguilar
Kevin Law
Greg Bohannon
Shane Long
Jeff Tanner
Chuck Smith
Clay Lindsey
Sean Hanna
Forrest Barnes
Dwayne Reynolds
Todd Metz

602-278-3554
602-303-7290
951-505-5955
813-365-3814
229-873-6605
208-505-8230
574-773-1555
574-773-1517
505-710-3361
503-999-9811
541-974-2144
615-988-7461
715-965-2482

adam.uhlenkott@cavco.com
jeff.severe@cavco.com
gabriel.aguilar@fleetwoodhomes.com
klaw@palmharbor.com
gbohannon@destinyhomebuilders.com
shane.long@fleetwoodhomes.com
jtanner@fairmonthomes.com
csmith@fairmonthomes.com
clay.lindsey@cavco.com
sean.hanna@fleetwoodhomes.com
fbarnes@palmharbor.com
dwayne.reynolds@fleetwoodhomes.com
todd.metz@cavco.com

FOR MORE INFORMATION, VISIT
Atmos.CavcoHomes.com

